

Prevention and Early Detection

Aquatic Invaders Summit II

2016



Agenda

- Case Study of Lake Washburn Experience
- Lessons Learned/Mistakes Made



Washburn EWM Timeline

- EWM Discovered in July 2009
 - Initially one floating fragment—DNR clean Bill After Full Lake Survey
 - Association Discovered live Plants to allow for treatment
- Treated 5.7 Acres September 2009
- Scuba, Boat, Kayak, Etc. Survey Summer 2010
 - Some plants found and hand-picked
 - Association Performed spot treatments
- Scuba, Boat, Kayak, Etc. Survey Summer 2011-13
 - No EWM Found

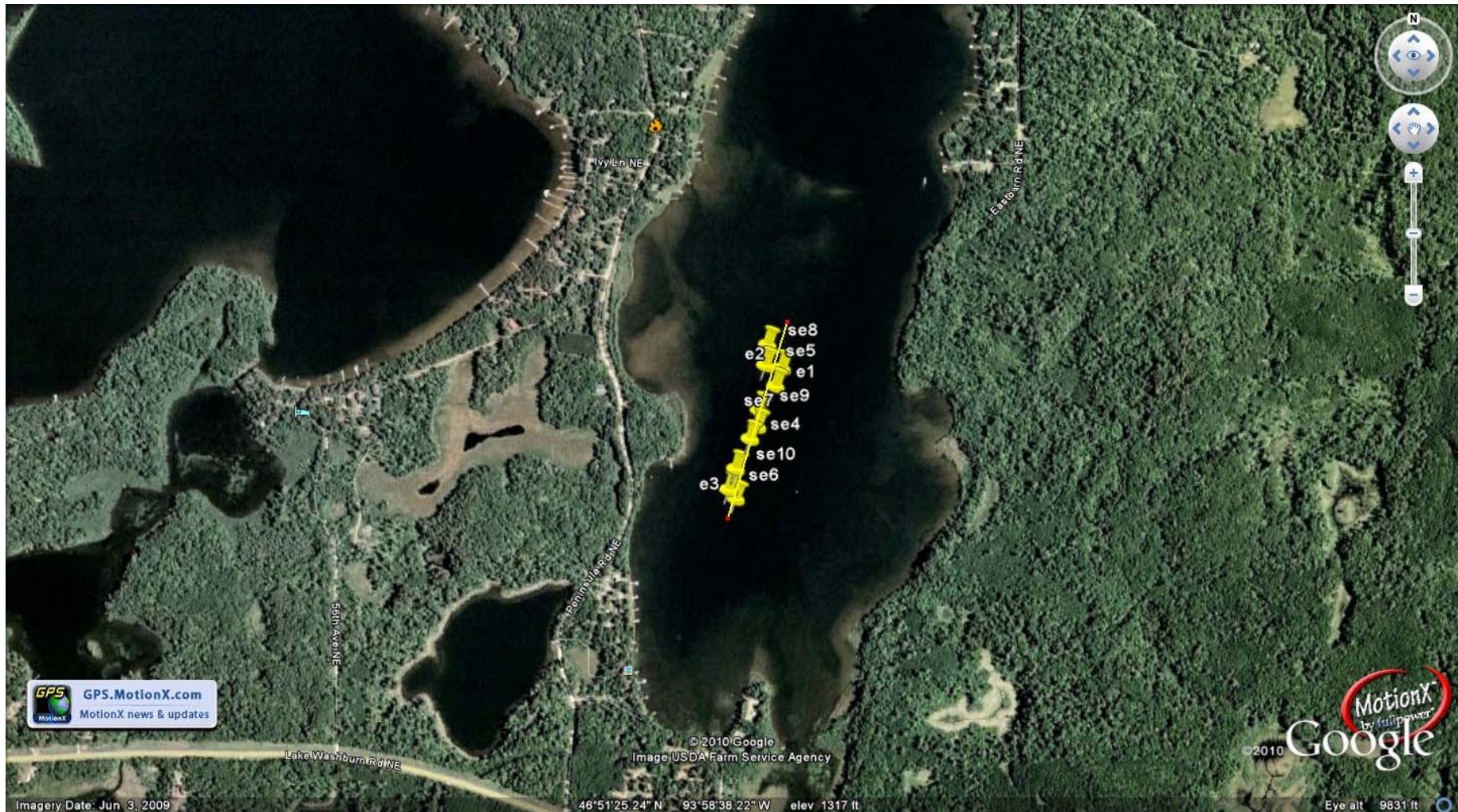


Washburn—EWM Timeline

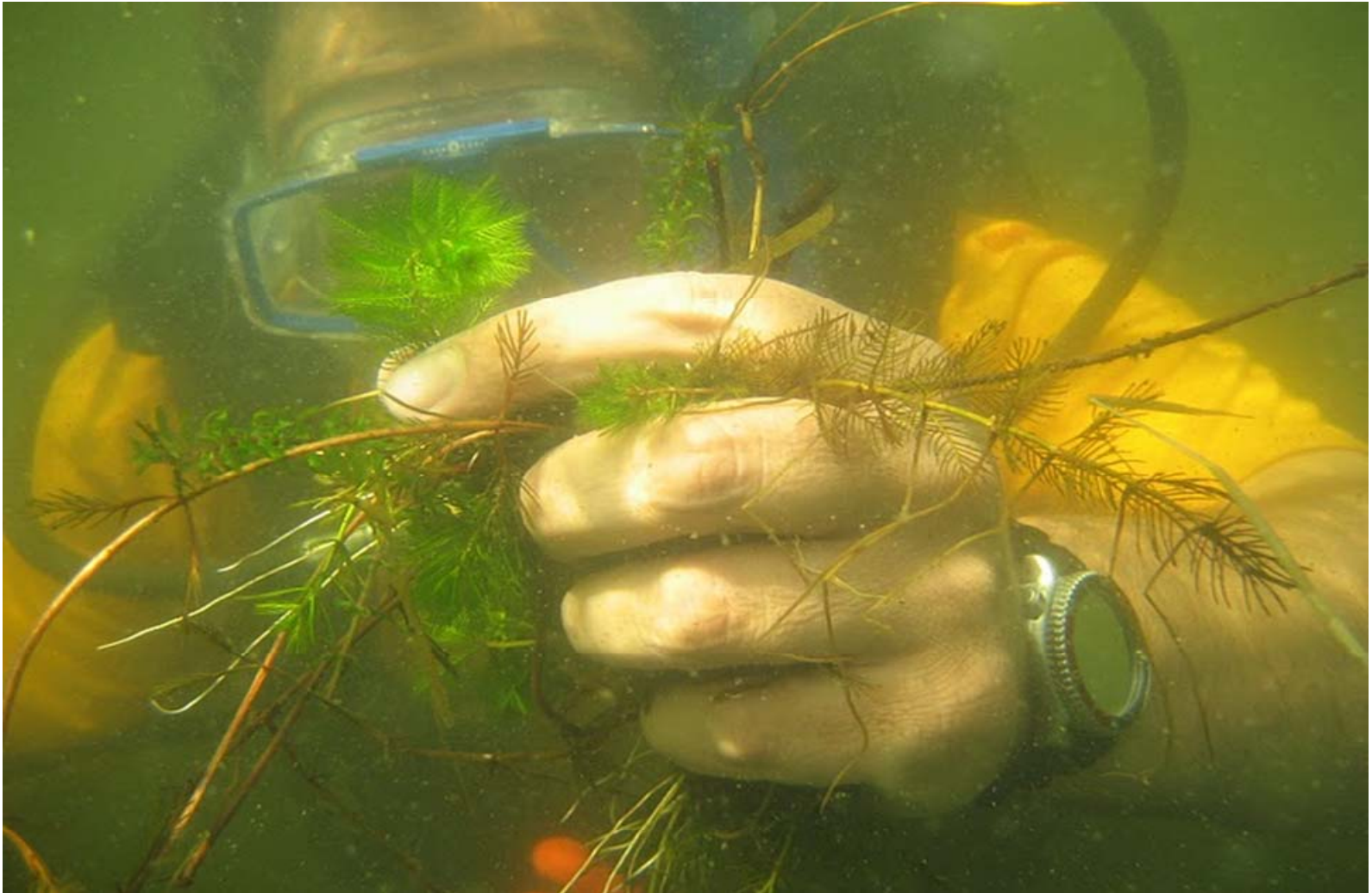
- EWM Rediscovered in 2014
 - Fisherman Discovered while Bass Fishing
- Treated 11 Acres early September 2014
 - Better Chemicals, no expense spared
- Scuba, Boat, Kayak, Etc. Survey Summer 2015-16
 - No Plants Found
 - Engaged Third Party Surveyor



Treated Area



Scuba!



Washburn—EWM Going Forward

- Surveying
 - Reengage Property Owners
 - Expand Third Party Surveying
- Continue to Raise Funds
 - Determine how much Reserves are Required
 - FOR LWA we want to have enough for two infestations in a year
- Continue Prevention Efforts
 - As Much Monitoring as possible



Washburn—EWM Before Infestation

- Active Boat Monitoring
 - Volunteer
 - Hired
- Some Education
 - Information Provided to Stakeholders
- Strong Financial Position
 - Enough Funds to an infestation



Washburn—EWM After Infestation

- Double Down!
 - Boat Monitoring
 - Education
 - Created lots of eyes!
- Education
 - EWM Classes
 - Beach Captains
- Strong Financial Position
 - Enough Funds to an infestation(s)
 - Fund Surveying



Washburn—Lessons Learned/Mistakes Made

- **Better Readiness**
 - Almost no one could identify EWM, Curly Leaf Pondweed, etc
 - More Education Should Have been pushed
 - Engage the Fisherman!
 - Create lots of eyes
- **Use Fear—Sorry to say**
 - Until it is real people are complacent
 - Beach Captains
 - Get Everyone to Understand Risks
- **Create Expectations for what the Costs will be...**
 - Create as big of a reserve as possible—Restricted donations!



For the Unfortunate and Fortunate ones

- **SWOT Analysis**
 - Do you have the capacity to do this on your own? (LIDS?)
 - What internal resources do you have?
 - How can you raise funds?
 - Can outsiders help?
 - What are likely scenarios?
 - Public and Private Access—Know your Vectors
 - Adjacent Lakes/Common Visitors
 - NEVER assume the DNR/State will help or come to the rescue—that is not its role
- **Use Fear—Sorry to say**
 - Until it is real people are complacent. Voluntary education effects some... Some not all.
 - Get Everyone to Understand Risks and what they can do
- **Create Expectations for what the Costs will be...**
 - Create as big of a reserve as possible—Restricted donations to build trust!



Overall Takeaways

- You are responsible for the lake! Love it, protect it....
 - Build alliances...Local engagement is key (Owners, Resorts, Service providers, Local Government, local businesses).
 - Build AIS skills on the lake
 - Target high risk areas
 - Encourage stewardship/responsibility
- Prevention
 - Who is coming into your lake and what do they have!
 - Get active volunteers with the right skills or hire them!
- Cancer Analogy...
 - We are all at high risk
 - Screen for your risk



Thank You

- Q & A

➤ Contact Information

❖ ttjohnsonCPA@comcast.net

❖ 612 619 6533

